

Orange Peel Grapples NG Orange Peel Grapples

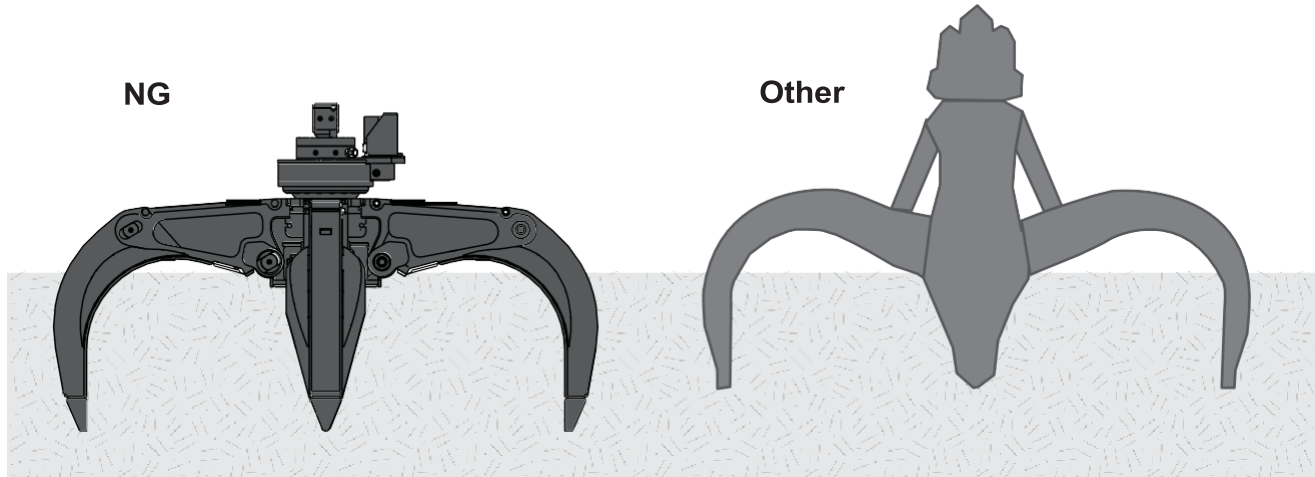
High Production

Maximum Penetration

Tine angle and tip shape of the NG grapple work together — punching tines into the scrap pile like daggers.

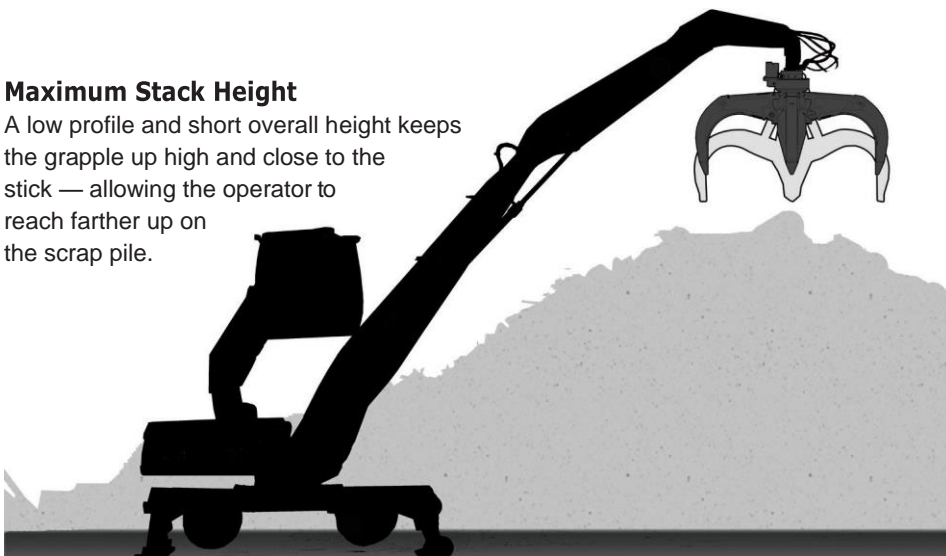
A high center contour allows the tines to penetrate deep before the body comes into contact with the pile.

Heavy duty cylinders create the clamping force required to penetrate through the pile.



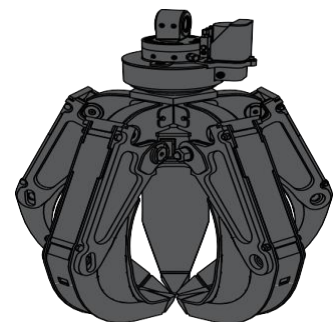
Maximum Stack Height

A low profile and short overall height keeps the grapple up high and close to the stick — allowing the operator to reach farther up on the scrap pile.

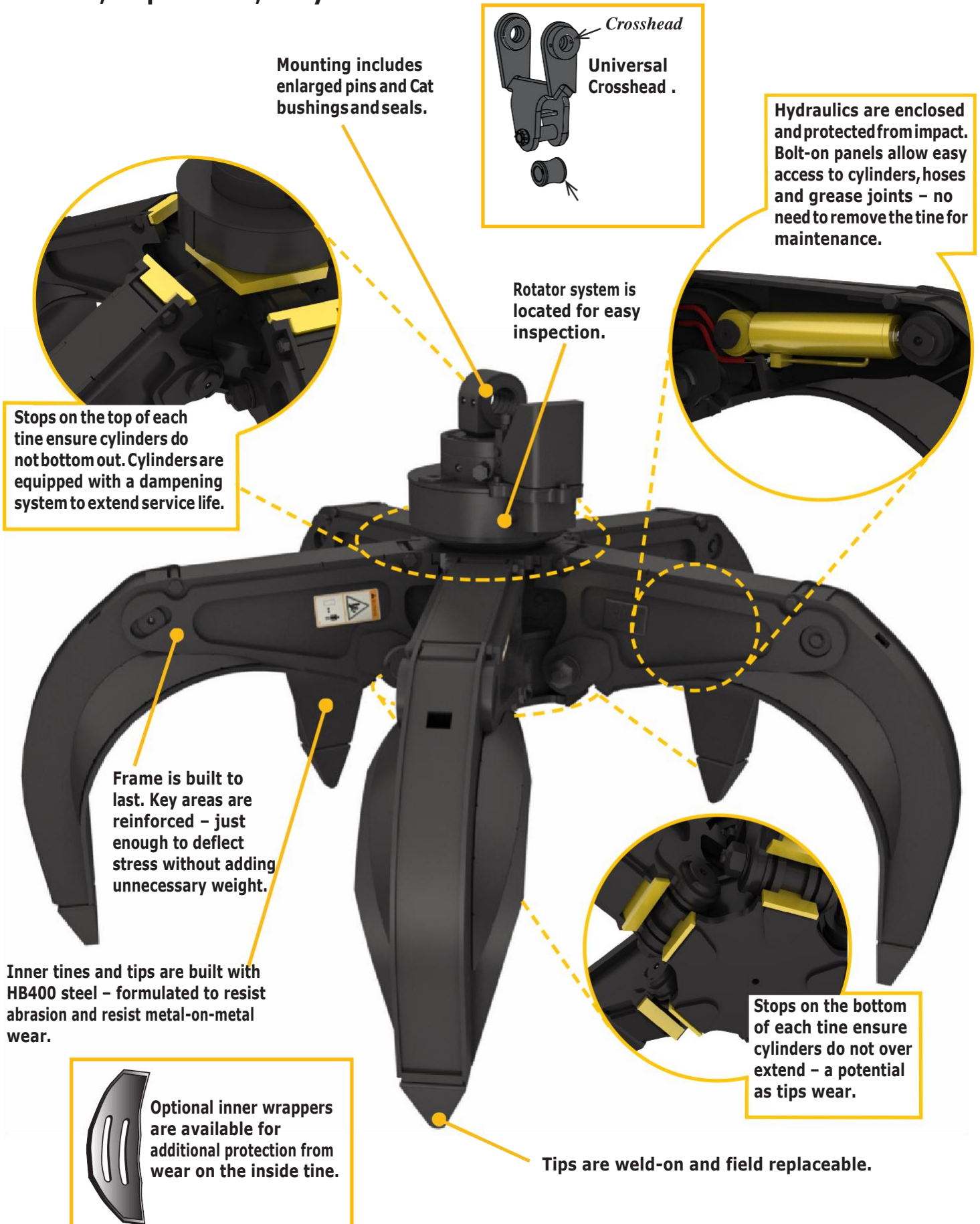


Square footprint of the four-tine grapple lends this configuration to more easily fit inside trucks, containers and rail cars. Four tines are beneficial when handling larger scrap like an automobile.

Five-tines provide close tine spacing and good retention of smaller loose material.



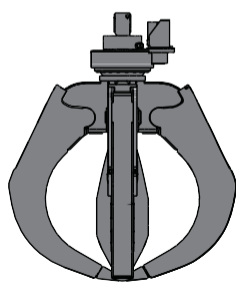
Reliable, Dependable, Easy to Maintain



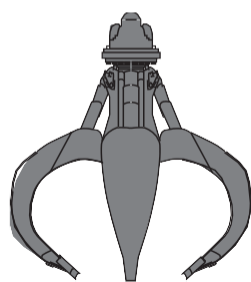
Specifications

Capacity Rating

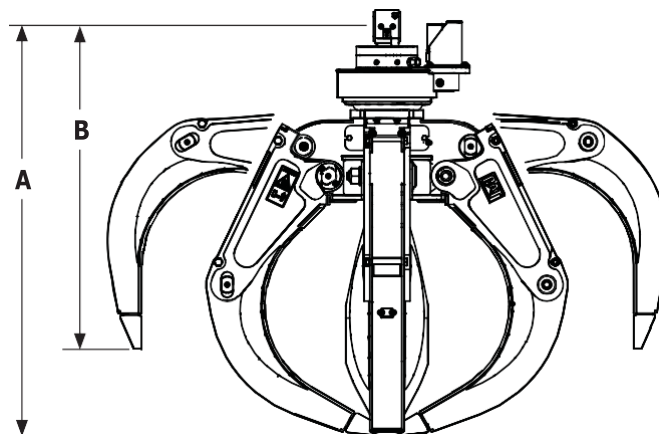
There is no industry standard for rating orange peel grapple capacity. NG Orange Peel Grapples are rated with tines fully closed. Competitors vary in their capacity ratings from fully closed to partially open tines.



NG



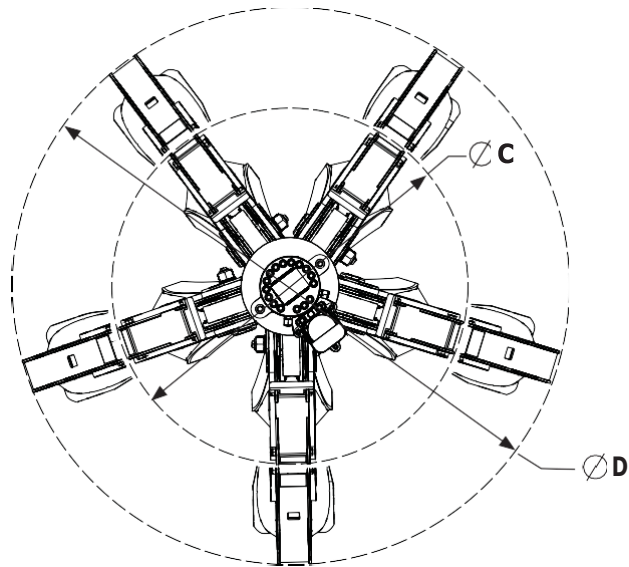
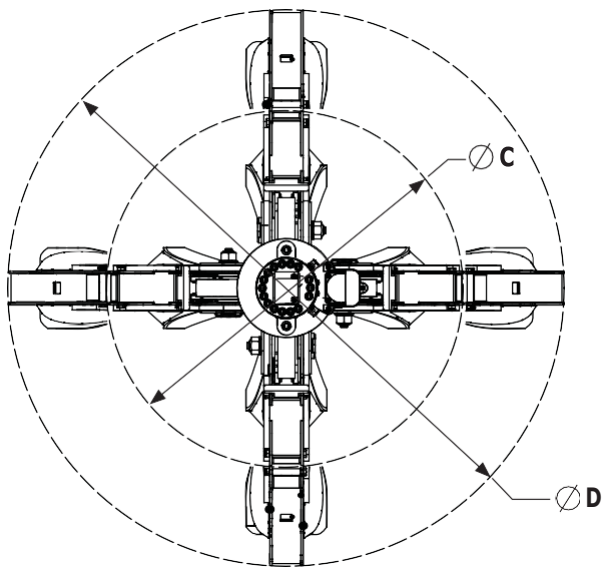
Other



| NGH15B | | | | | | NGH20B | | | | | | | | |
|------------------------------|-------|--------------------|---------------------------|---------|-------|---------|-------|----------|--------|----------|-------|----------|--|--|
| | | | Tine Configuration 4-tine | | | 5-tine | | | 4-tine | | | 4-tine | | |
| Capacity, tines closed | L | (yd ³) | 600 | (0.75) | 600 | (0.75) | 600 | (0.75) | 800 | (1.00) | 1,000 | (1.25) | | |
| Operating Weight* | kg | (lb) | 1,215 | (2,679) | 1,450 | (3,197) | 1,575 | (3,472) | 1,615 | (3,660) | 1,660 | (3,660) | | |
| Maximum Lift Capacity | kg | (lb) | 4,000 | (8,818) | 4,000 | (8,818) | 8,000 | (17,637) | 8,000 | (17,637) | 8,000 | (17,637) | | |
| Dimensions | | | | | | | | | | | | | | |
| A Height, tines closed | mm | (in) | 1,740 | (68.50) | 1,760 | (69.29) | 1,720 | (67.72) | 1,860 | (73.23) | 2,010 | (79.13) | | |
| B Height, tines open | mm | (in) | 1,385 | (54.53) | 1,400 | (55.12) | 1,440 | (56.69) | 1,510 | (59.45) | 1,590 | (62.60) | | |
| C Diameter, tines closed | mm | (in) | 1,540 | (60.63) | 1,500 | (59.05) | 1,735 | (68.31) | 1,735 | (68.31) | 1,735 | (68.31) | | |
| D Diameter, tines open | mm | (in) | 2,415 | (95.08) | 2,340 | (92.13) | 2,390 | (94.09) | 2,595 | (101.97) | 2,855 | (102.40) | | |
| Ground clearance, tines open | mm | (in) | 640 | (25.20) | 650 | (25.59) | 645 | (25.40) | 715 | (28.15) | 790 | (31.10) | | |
| Pin diameter | mm | (in) | 70 | (2.76) | 70 | (2.76) | 80 | (3.15) | 80 | (3.15) | 80 | (3.15) | | |
| Width of crosshead | mm | (in) | 114 | (4.49) | 114 | (4.49) | 150 | (5.91) | 150 | (5.91) | 150 | (5.91) | | |
| Overall width | mm | (in) | 1,810 | (71.26) | 2,230 | (87.8) | 1,800 | (70.87) | 1,930 | (75.98) | 2,125 | (83.66) | | |
| Maximum opening | mm | (in) | 2,121 | (83.50) | 2,121 | (83.5) | 2,064 | (81.26) | 2,305 | (90.75) | 2,552 | (100.47) | | |
| Hydraulic open/close | | | | | | | | | | | | | | |
| Maximum pressure | bar | (psi) | 350 | (5,076) | 350 | (5,076) | 350 | (5,076) | 350 | (5,076) | 350 | (5,076) | | |
| Optimum flow | L/min | (gpm) | 100 | (26.42) | 100 | (26.42) | 150 | (39.63) | 150 | (39.63) | 150 | (39.63) | | |
| Hydraulic rotation | | | | | | | | | | | | | | |
| Maximum pressure | bar | (psi) | 180 | (2,610) | 180 | (2,610) | 200 | (2,900) | 200 | (2,900) | 200 | (2,900) | | |
| Optimum pressure | bar | (psi) | 140 | (2,030) | 140 | (2,030) | 160 | (2,320) | 160 | (2,320) | 160 | (2,320) | | |
| Optimum flow | L/min | (gpm) | 20 | (5.28) | 20 | (5.28) | 20 | (5.28) | 20 | (5.28) | 20 | (5.28) | | |

* Excludes crosshead mounting bracket.

Specifications



| NGH20B | | | | NGH22B | | | | | | | |
|---------------------------------|-------|--------------------|----------------|----------------|-----------------|-----------------|-----------------|--------|--|--------|--|
| Tine Configuration | | 5-tine | | 5-tine | | 4-tine | | 4-tine | | 4-tine | |
| Capacity, tines closed | L | (yd ³) | 800 (1.00) | 1,000 (1.25) | 1,200 (1.50) | 1,500 (2.00) | 2,000 (2.50) | | | | |
| Operating Weight* | kg | (lb) | 1920 (4,232) | 1,975 (4,354) | 2,390 (5,269) | 2,410 (5,313) | 2,430 (5,360) | | | | |
| Maximum Lift Capacity | kg | (lb) | 8,000 (17,637) | 8,000 (17,637) | 12,000 (26,455) | 12,000 (26,455) | 12,000 (26,455) | | | | |
| Dimensions | | | | | | | | | | | |
| A Height, tines closed | mm | (in) | 1,860 (73.23) | 2,010 (79.13) | 2,175 (85.63) | 2,265 (89.17) | 2,345 (92.32) | | | | |
| B Height, tines open | mm | (in) | 1,510 (59.45) | 1,590 (62.60) | 1,830 (72.05) | 1,880 (72.36) | 1,930 (75.98) | | | | |
| C Diameter, tines closed | mm | (in) | 1,735 (68.31) | 1,735 (68.31) | 2,050 (80.71) | 2,050 (80.71) | 2,058 (81.02) | | | | |
| D Diameter, tines open | mm | (in) | 2,595 (101.97) | 2,855 (102.40) | 2,950 (116.14) | 3,050 (120.08) | 3,190 (125.59) | | | | |
| Ground clearance, tines open | mm | (in) | 715 (28.15) | 790 (31.10) | 900 (35.43) | 955 (37.60) | 1,000 (39.37) | | | | |
| Pin diameter | mm | (in) | 80 (3.15) | 80 (3.15) | 90 (3.54) | 90 (3.54) | 90 (3.54) | | | | |
| Width of crosshead | mm | (in) | 150 (5.91) | 150 (5.91) | 200 (7.87) | 200 (7.87) | 200 (7.87) | | | | |
| Overall width | mm | (in) | 2,395 (94.29) | 2,635 (103.74) | 2,230 (87.80) | 2,320 (91.34) | 2,320 (91.34) | | | | |
| Maximum opening | mm | (in) | 2,305 (90.75) | 2,552 (100.47) | 2,522 (99.29) | 2,675 (105.31) | 2,853 (112.32) | | | | |
| Hydraulic open/close | | | | | | | | | | | |
| Maximum pressure | bar | (psi) | 350 (5,076) | 350 (5,076) | 350 (5,076) | 350 (5,076) | 350 (5,076) | | | | |
| Optimum flow | L/min | (gpm) | 150 (39.63) | 150 (39.63) | 200 (52.83) | 200 (52.83) | 200 (52.83) | | | | |
| Hydraulic rotation | | | | | | | | | | | |
| Maximum pressure | bar | (psi) | 200 (2,900) | 200 (2,900) | 200 (2,900) | 200 (2,900) | 200 (2,900) | | | | |
| Optimum pressure | bar | (psi) | 160 (2,320) | 160 (2,320) | 160 (2,320) | 160 (2,320) | 160 (2,320) | | | | |
| Optimum flow | L/min | (gpm) | 20 (5.28) | 20 (5.28) | 20 (5.28) | 20 (5.28) | 20 (5.28) | | | | |

* Excludes crosshead mounting bracket.

Orange Peel Grapples are also available for mounting on excavators with standard fronts, as well as on competitive material handlers. Contact your NG Attachments for more details.



NURGROUP ENGINEERING

Phone: +90.312 440 60 34 Fax: +90.312 440 60 76

Adress: Melih Gökçek Street 1548/48 Ostim İvedik ANKARA-TURKEY

info@nurgroup.com.tr

www.ngattachments.com